
Polarity Checks: Sector 78

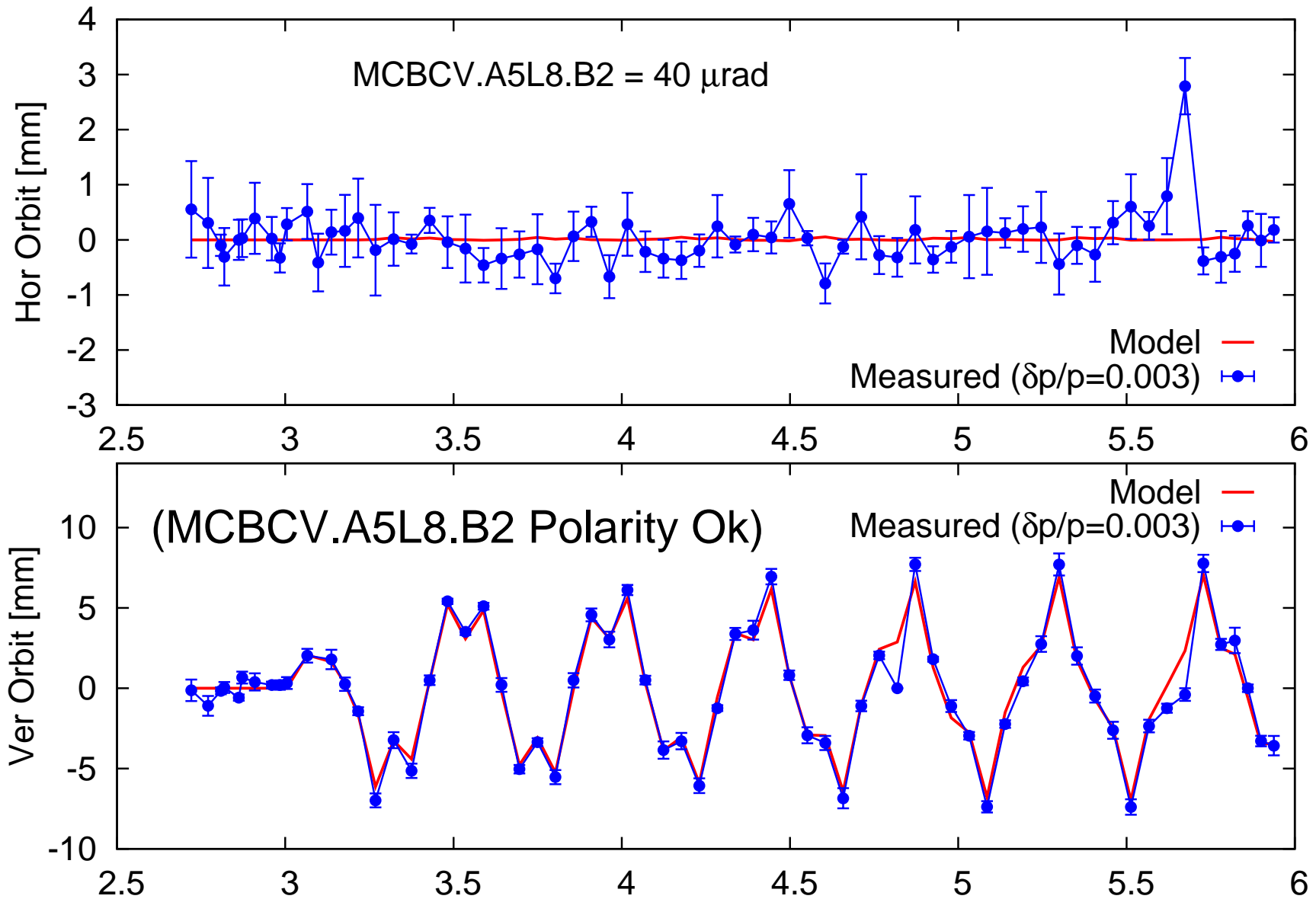
+ ? -

R. Calaga, Y. Sun, R. Tomás, F. Zimmermann, OP

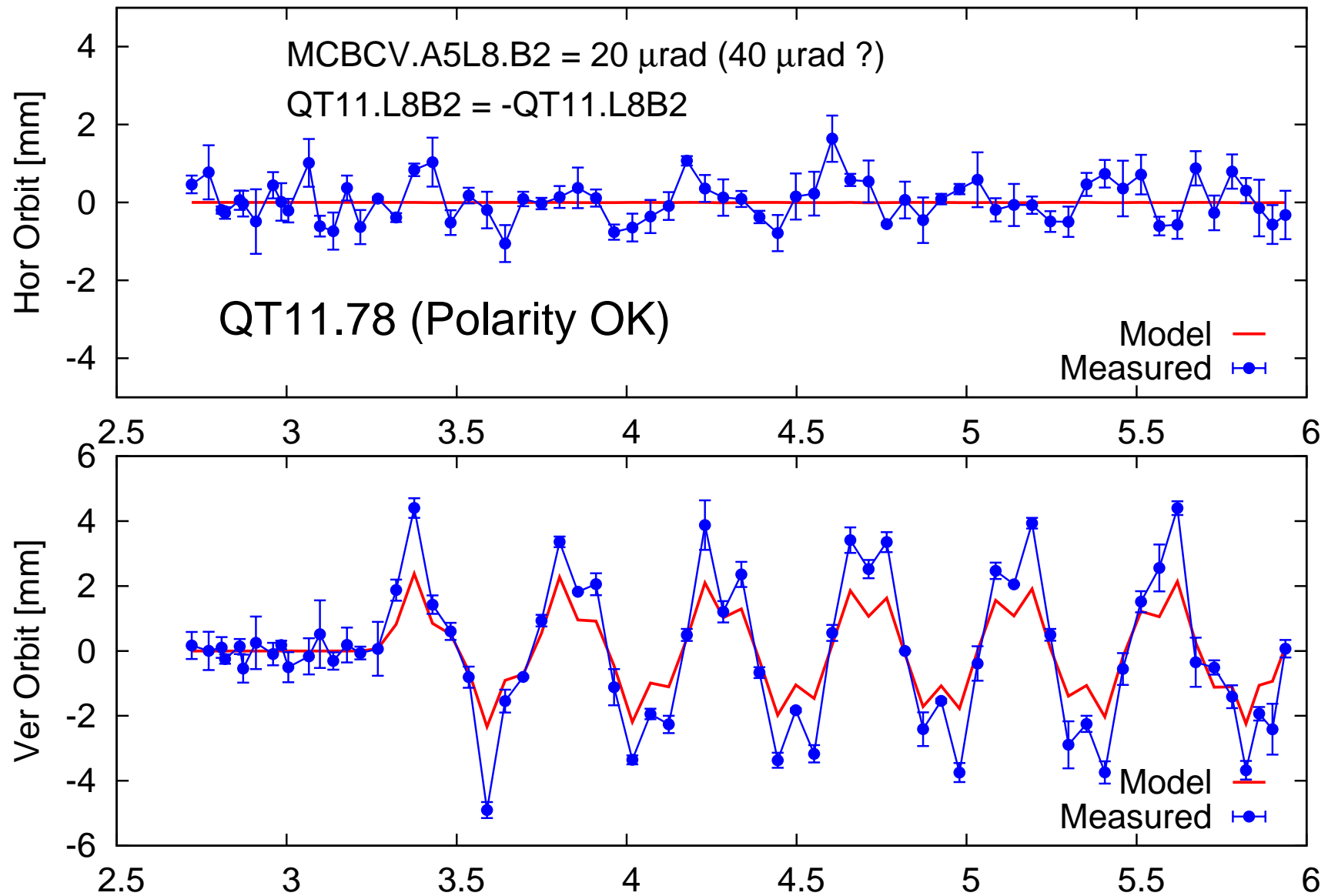
BNL/LARP, CERN

Sep 5, 2008

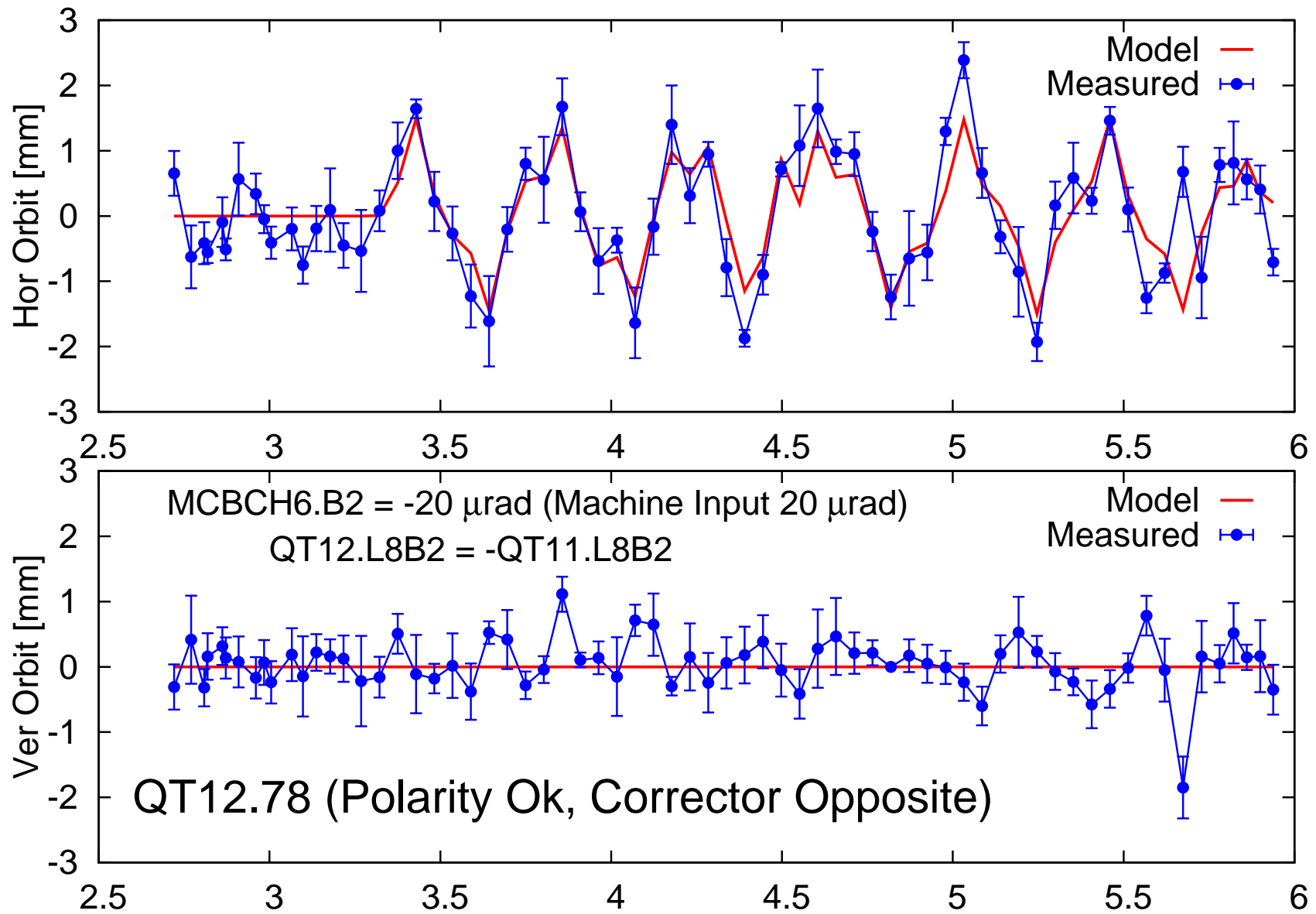
MCBCV.A5L8.B2 (Polarity Ok)



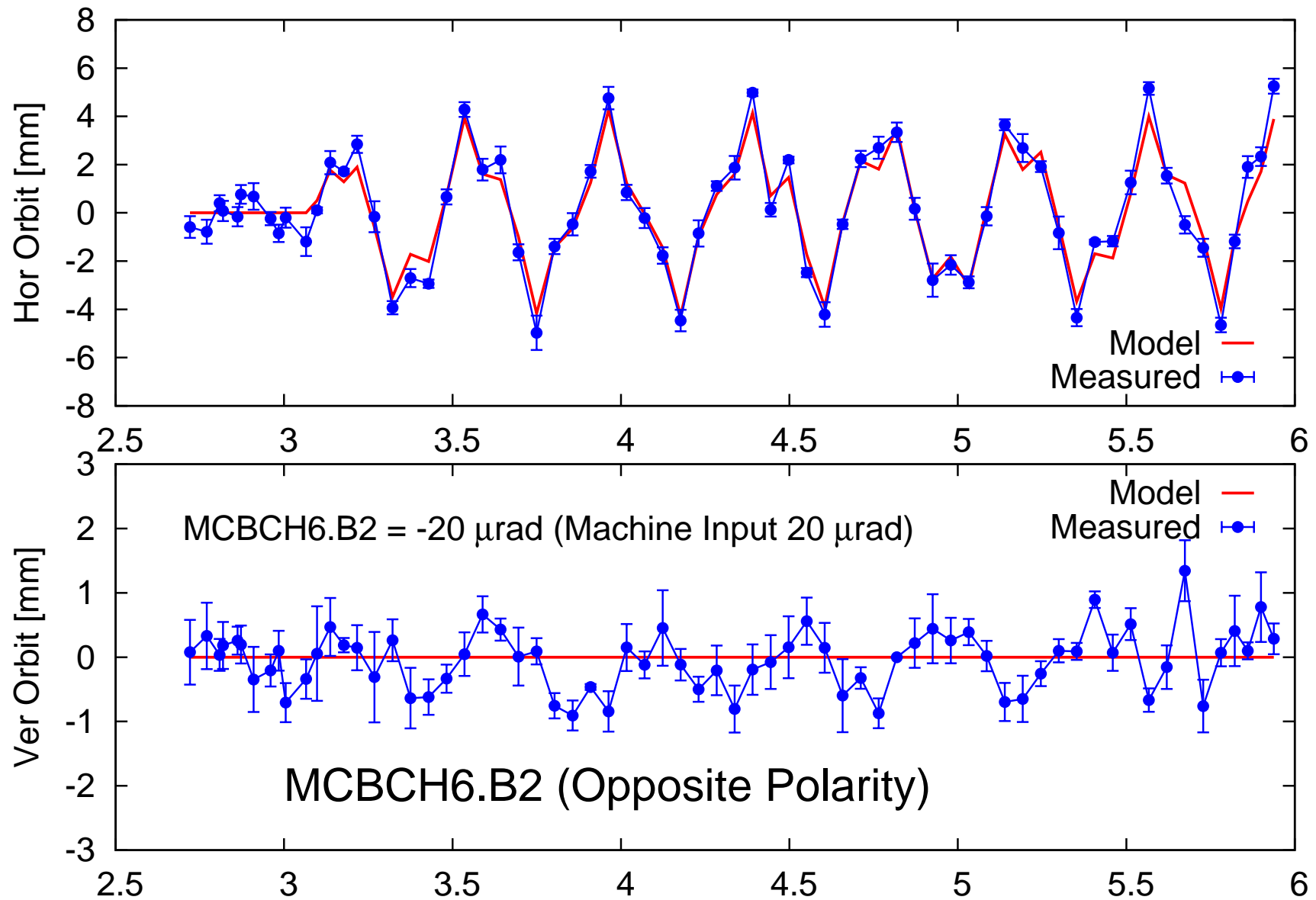
QT11.78, Polarity OK



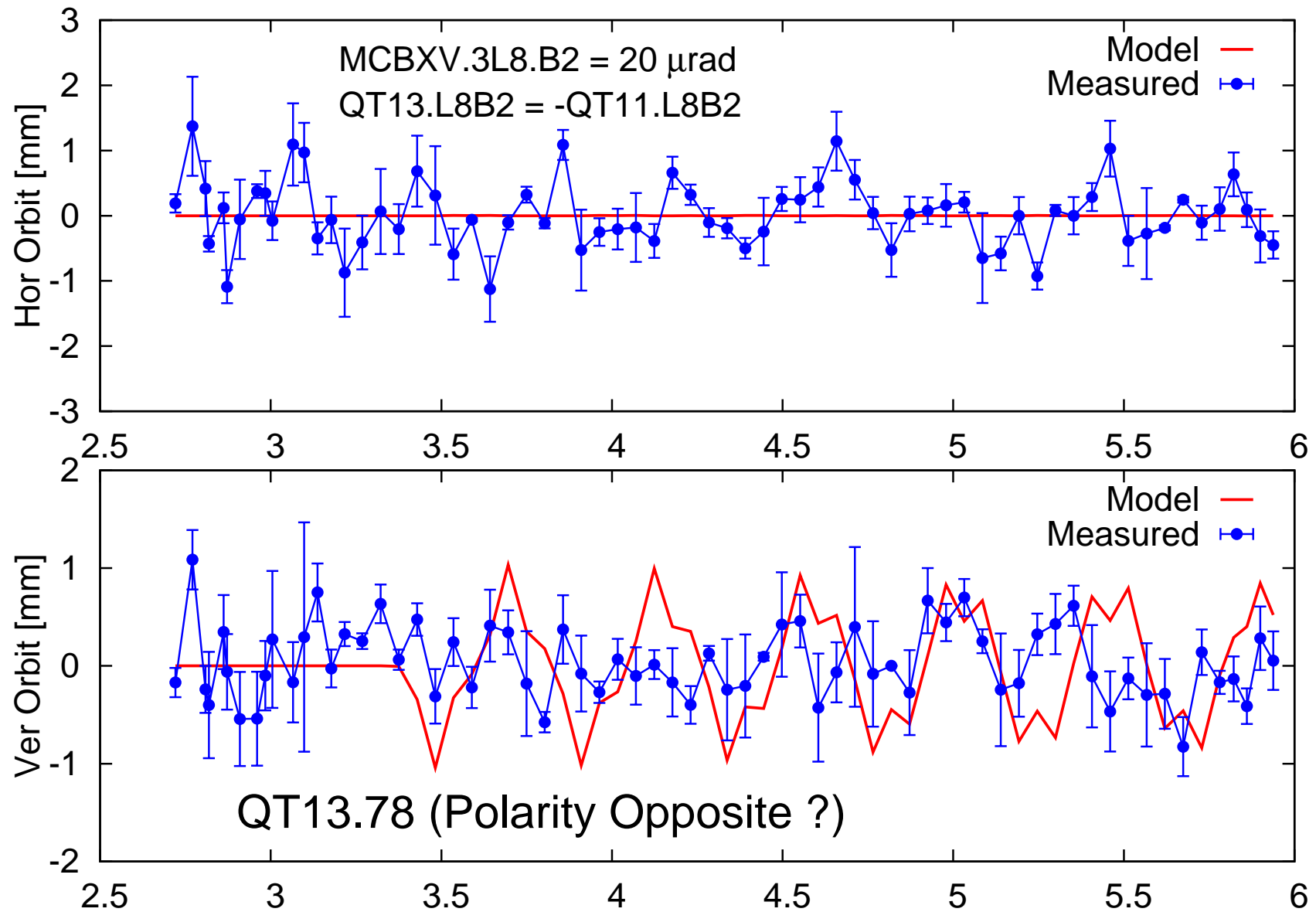
QT12.78, Polarity Ok



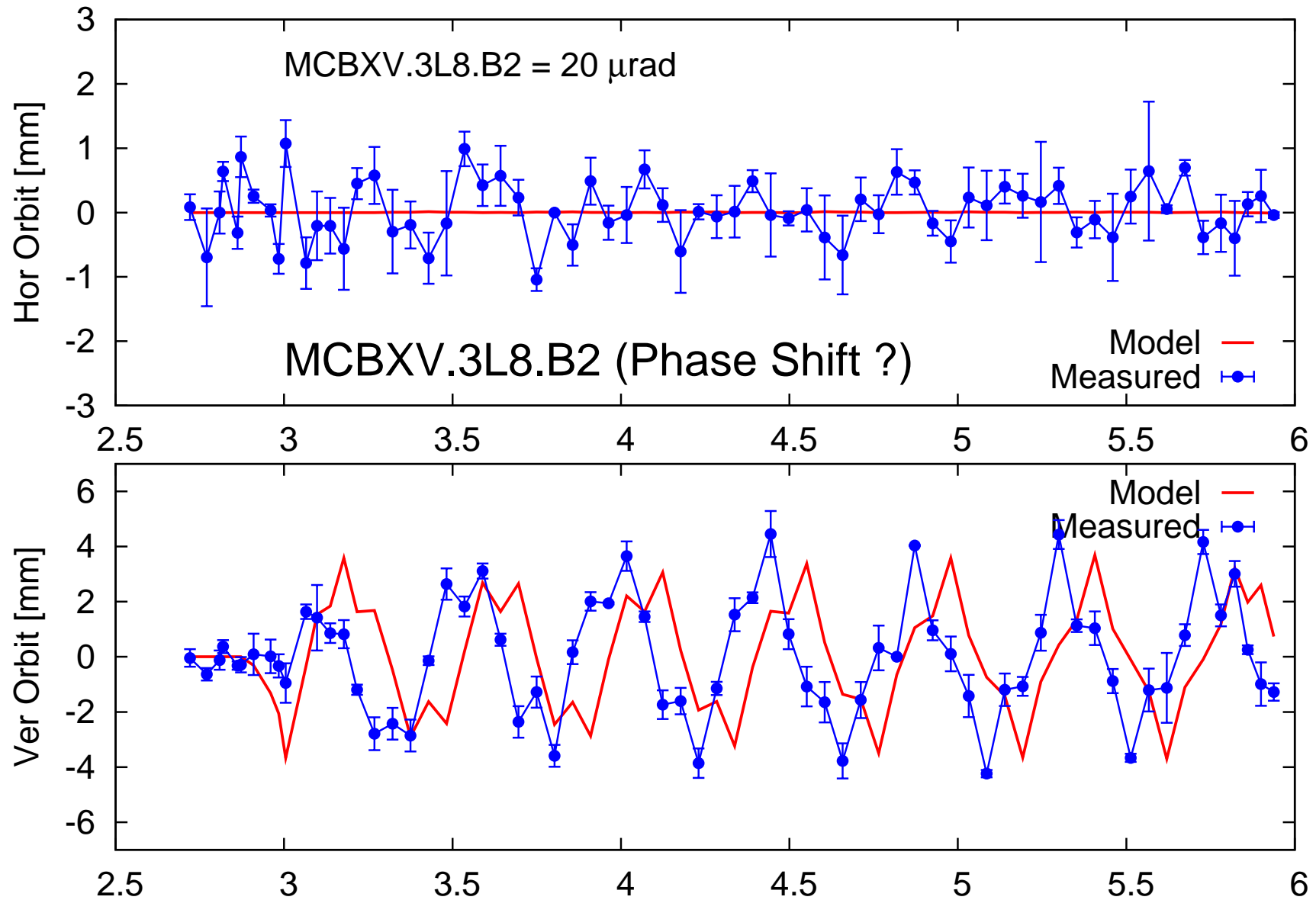
MCBCH6.B2, Opposite Polarity



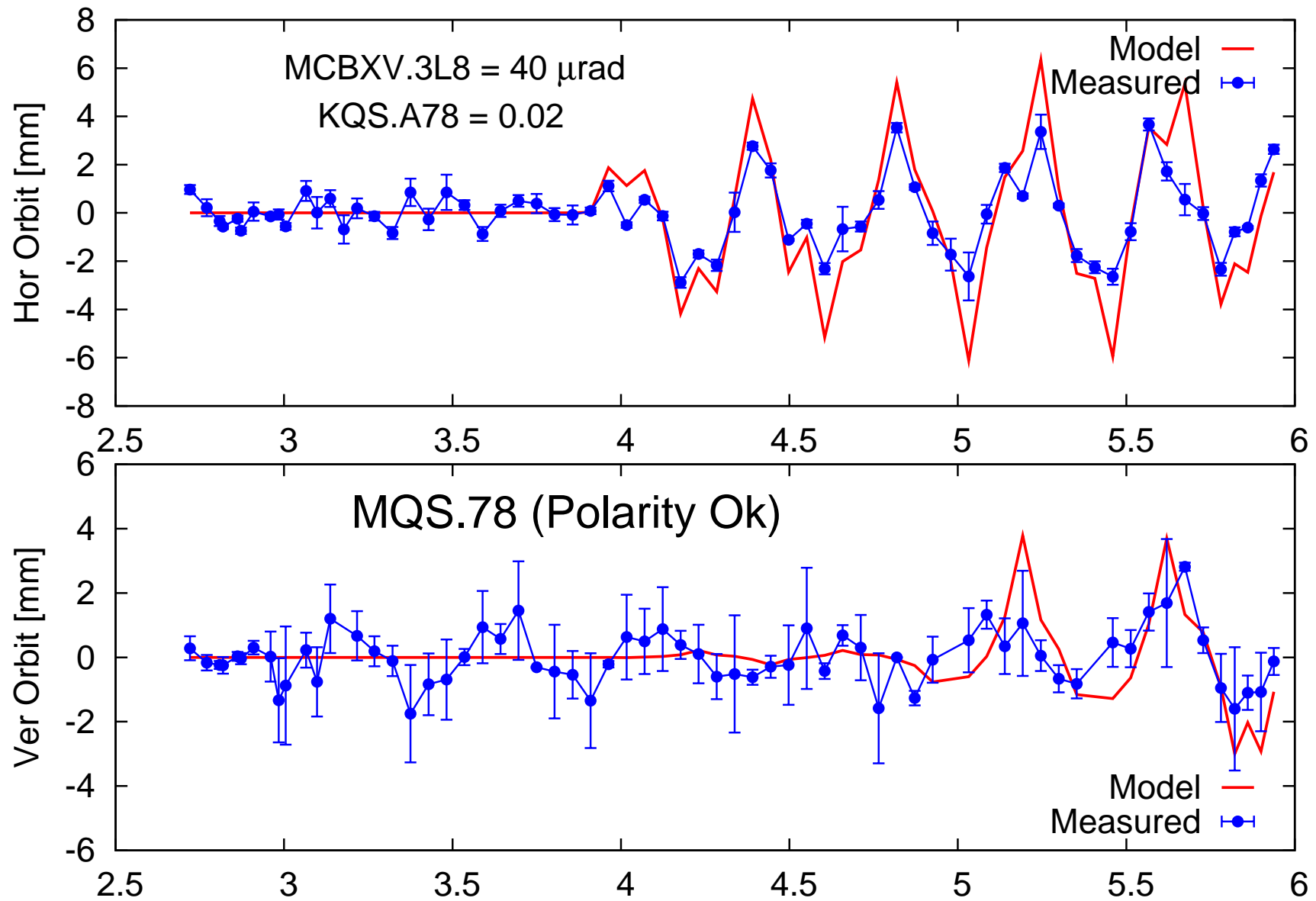
QT13.78, Opposite -or- Corrector



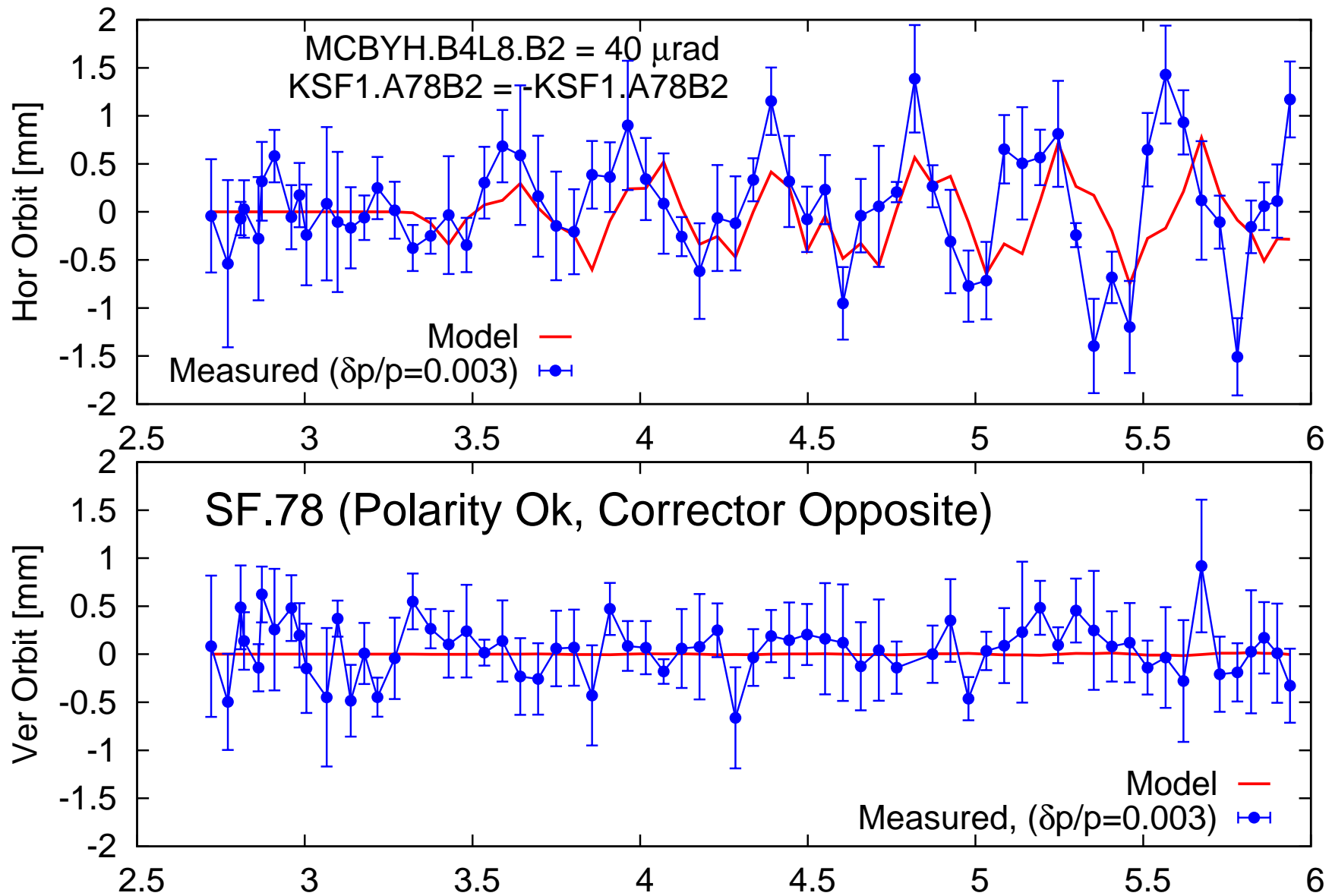
MCBXV.3L8.B2 (Phase Shift ?)



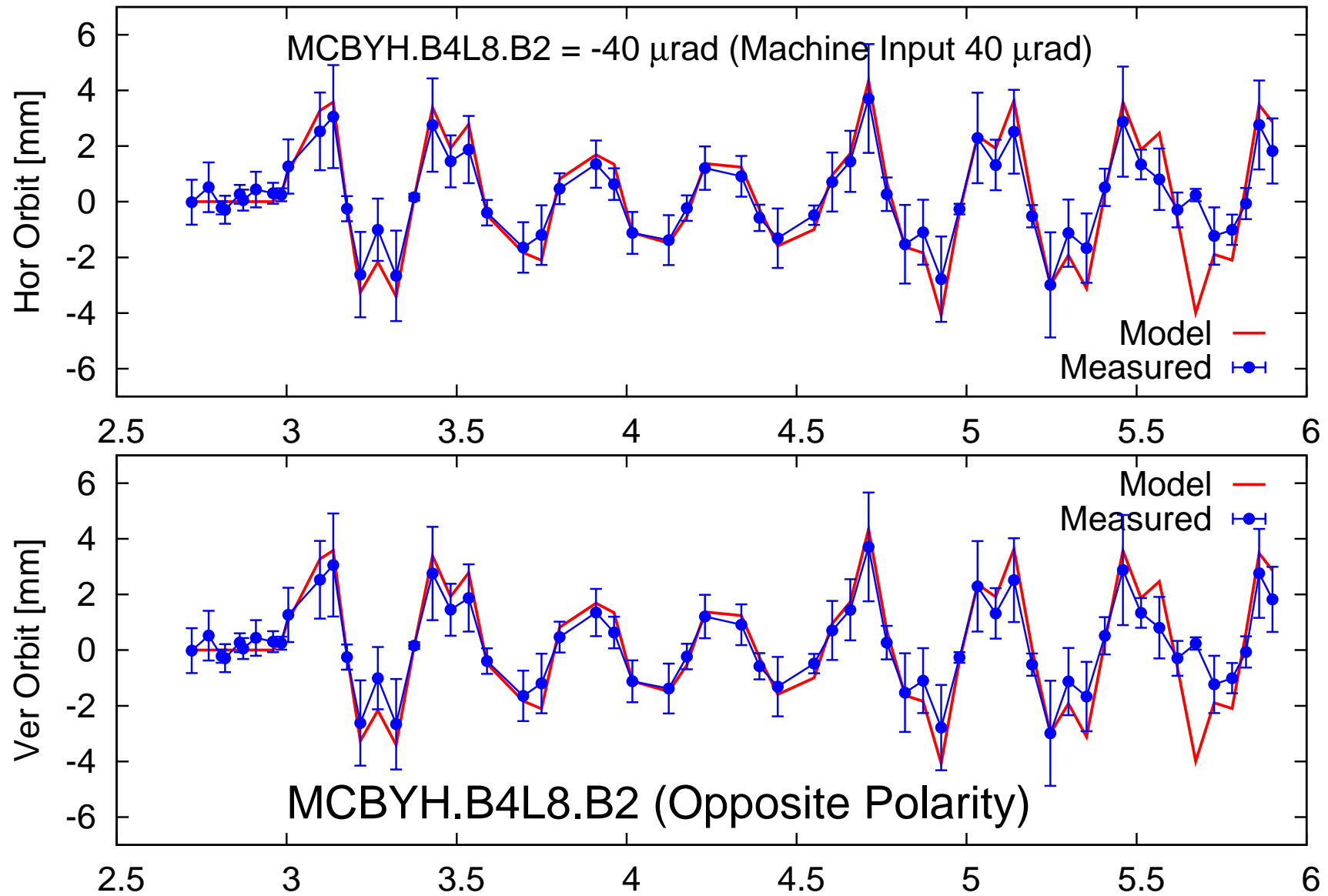
MQS.78, Polarity Ok



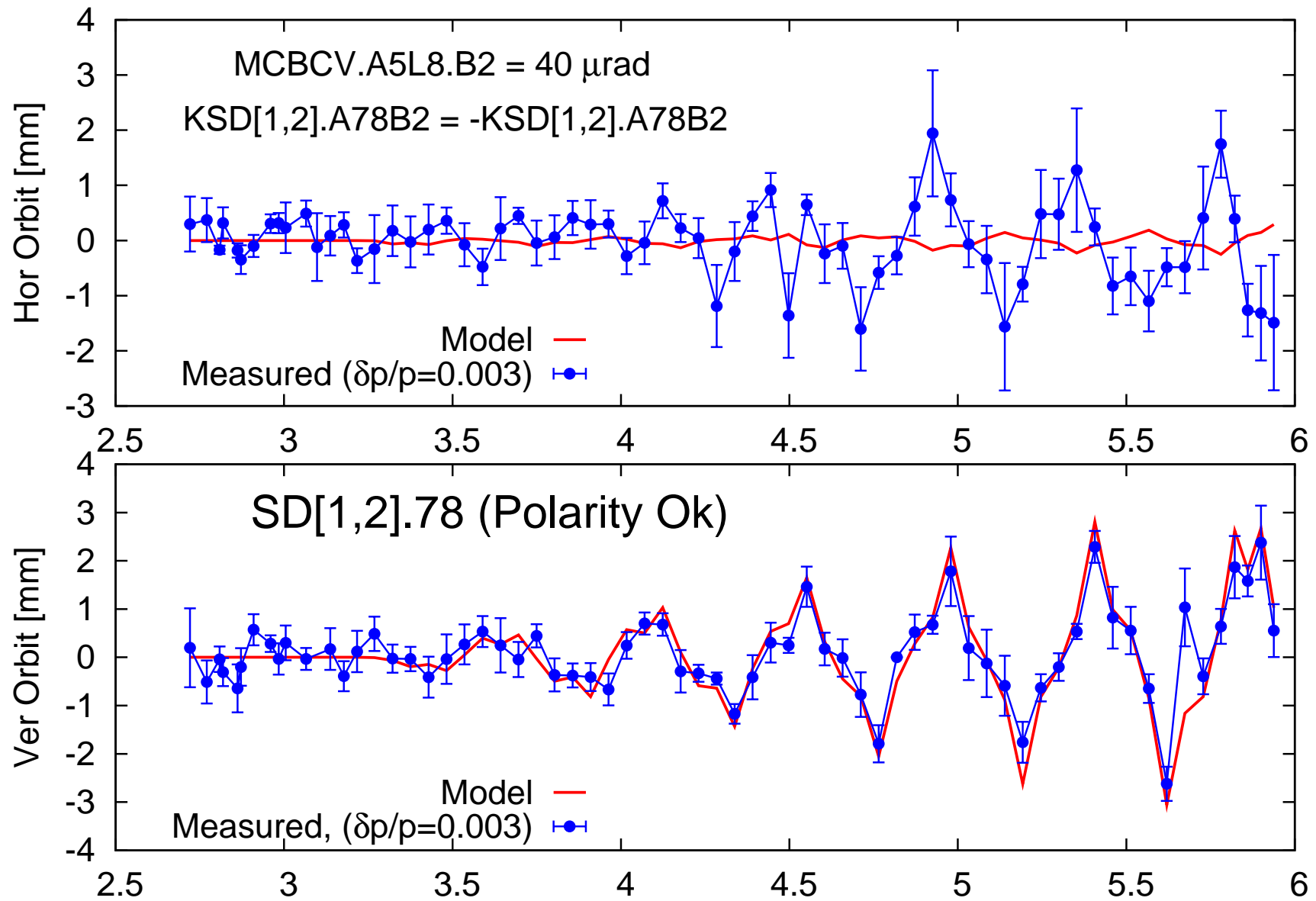
SF1.A78, Opposite -or- Corrector



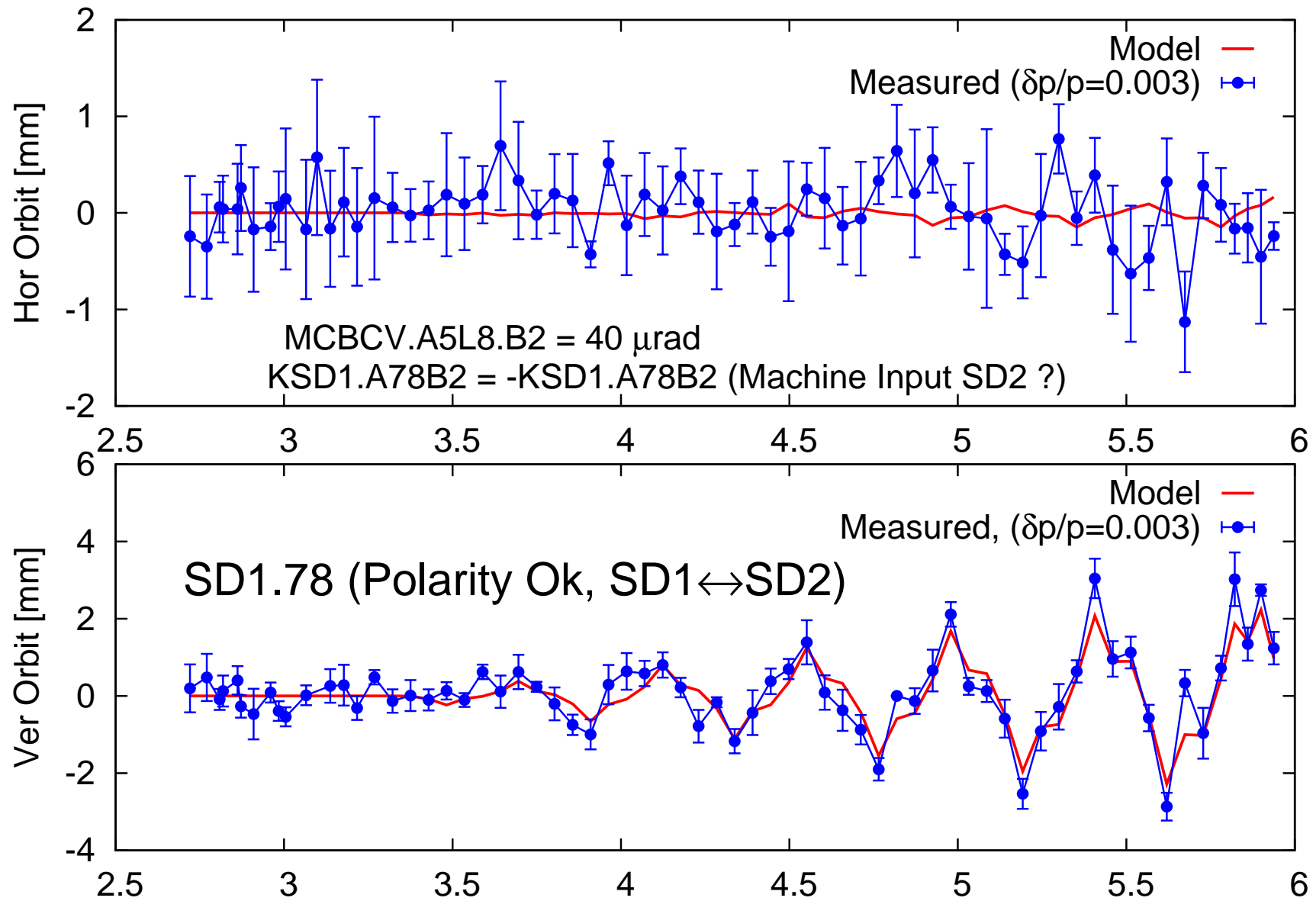
MCBYH.B4L8.B2, Opposite Polarity



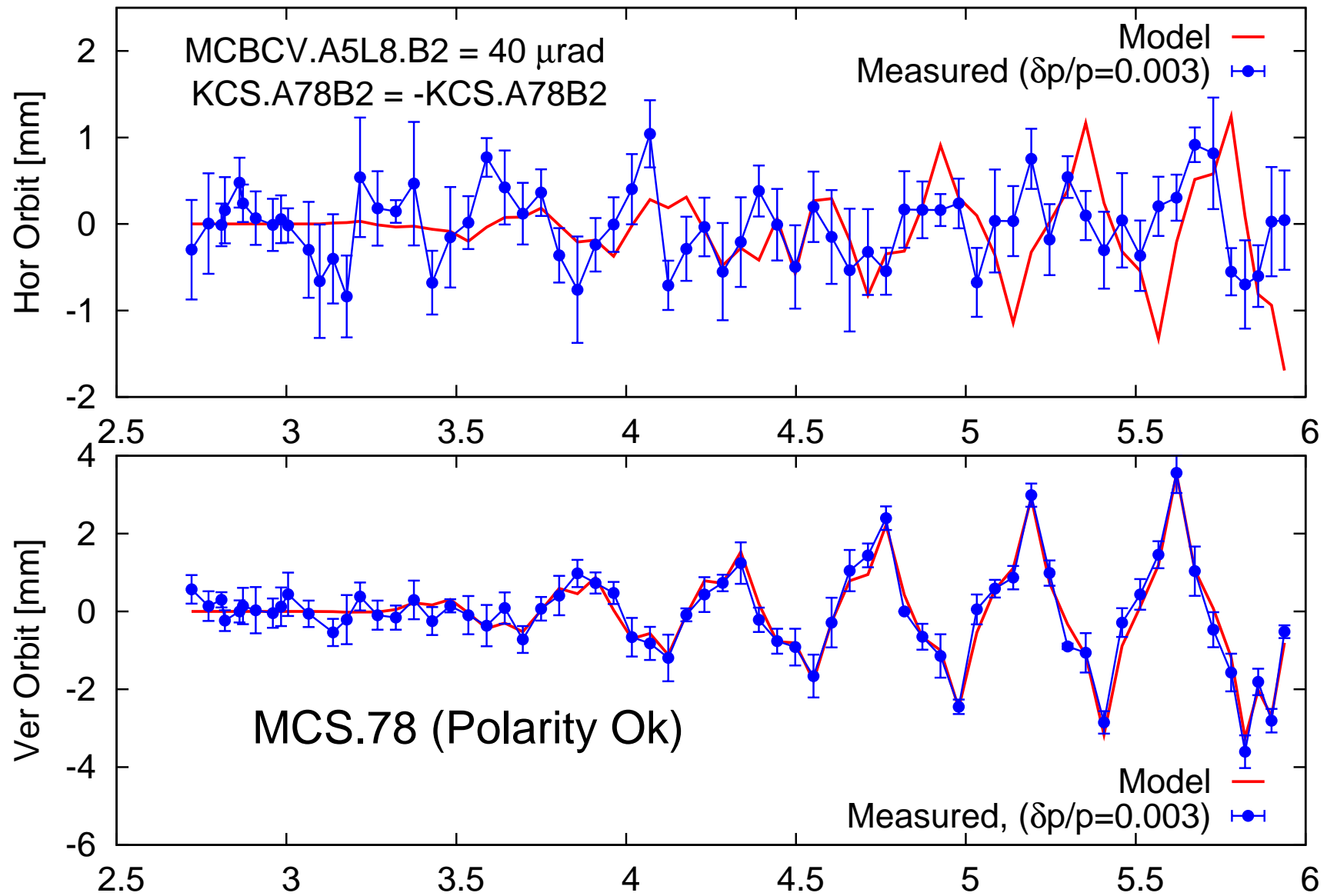
SD1.A78 & SD2.A78, Polarity Ok



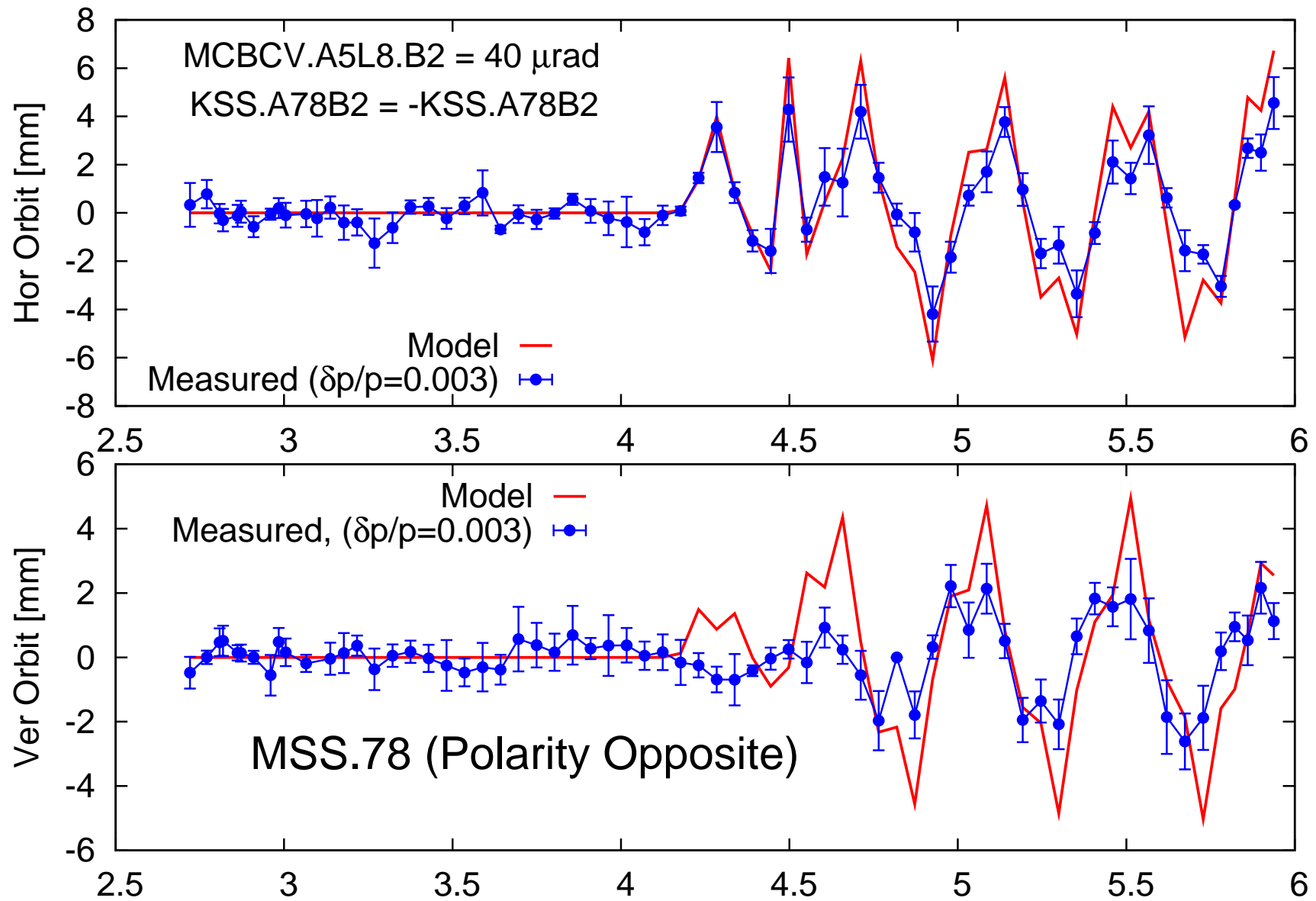
SD1.A78, Polarity Ok



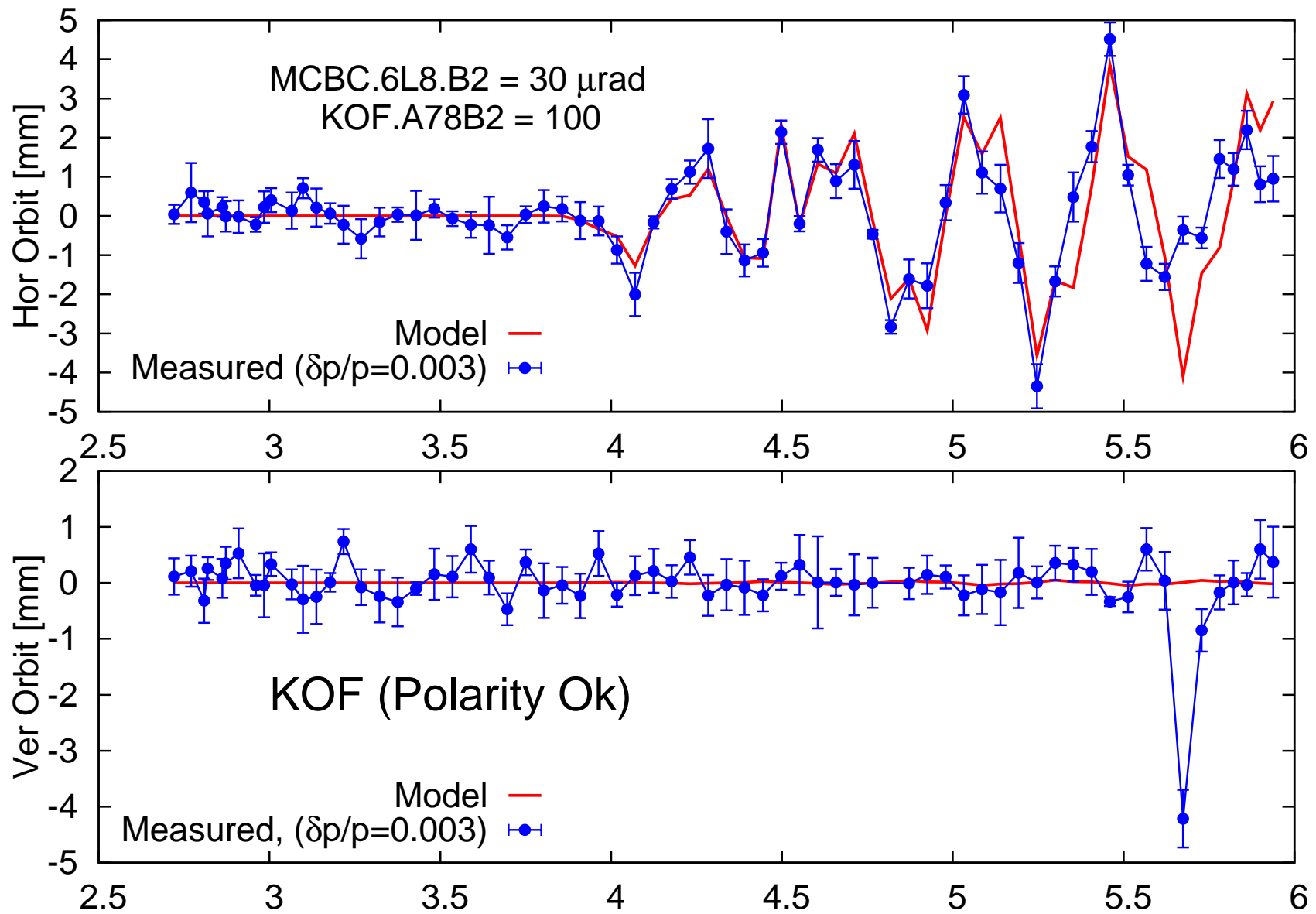
RCS.A78, Polarity Ok



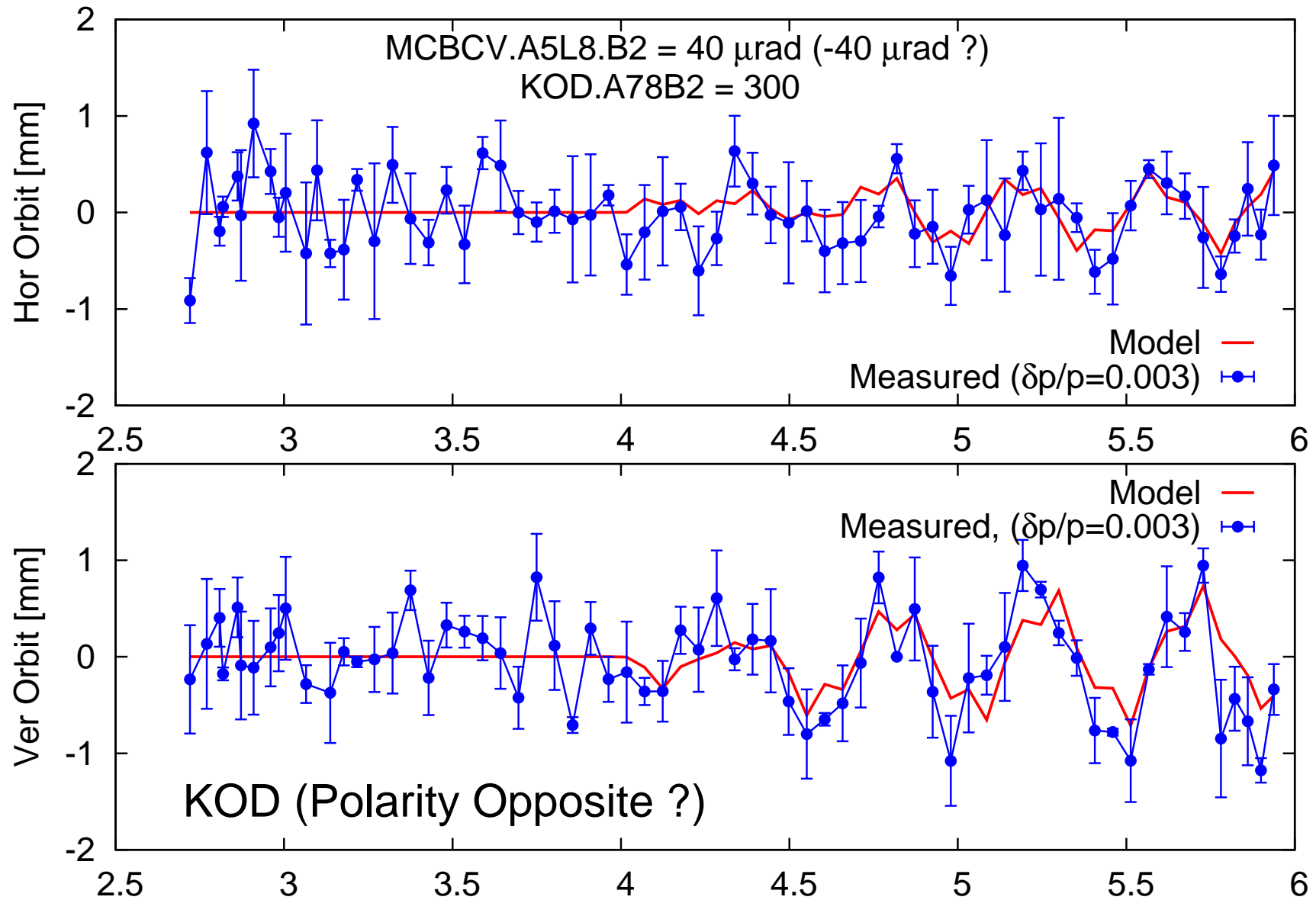
RSS.A78, Opposite Polarity



KOF.A78, Polarity Ok



KOD.A78, Opposite Polarity (?)



Conclusions

- Polarity problems:
 - Trim Quad: QT13.78 (?)
 - Skew Sextupoles: RSS.A78
 - Corrector H: MCBYH.B4L8.B2
 - Corrector H: MCBCH6.B2
- Unknown Problem:
 - Corrector V: MCBXV.3L8.B2
 - SD1.78 \leftrightarrow SD2.78 (?)
 - Octupoles: KOD.A78 (?)
- Polarities OK:
 - Trim & Skew Quads: QT11.78, QT12.78 & MQS.78
 - Sextupoles: SF1.A78 (?), SD[1,2].A78
 - B₃ Spool Pieces: RCS.A78
 - Octupoles: KOF.A78